

Is there correlation between Fine Structure and Dark Energy Cosmic Dipoles?

Antonio Mariano*

*Dipartimento di Matematica e Fisica, Università del Salento & INFN, Via Arnesano, 73100 Lecce, Italy
Physics Division, School of Technology, Aristotle University, 54124 Thessaloniki, Greece*

Leandros Perivolaropoulos†

Department of Physics, University of Ioannina, Greece

(Dated: June 26, 2012)

We present a detailed analysis (including redshift tomography) of the cosmic dipoles in the Keck+VLT quasar absorber and in the Union2 SnIa samples. We show that the fine structure constant cosmic dipole obtained through the Keck+VLT quasar absorber sample at 4.1σ level, is anomalously aligned with the corresponding dark energy dipole obtained through the Union2 sample at 2σ level. The angular separation between the two dipole directions is $11.3^\circ \pm 11.8^\circ$. We use Monte Carlo simulations to find the probability of obtaining the observed dipole magnitudes with the observed alignment, in the context of an isotropic cosmological model with no correlation between dark energy and fine structure constant. We find that this probability is less than one part in 10^6 . We propose a simple physical model (extended topological quintessence) which naturally predicts spherical inhomogeneous distribution for both dark energy density and fine structure constant values. The model is based on the existence of a recently formed giant global monopole with Hubble scale core which also couples non-minimally to electromagnetism. Aligned dipole anisotropies would naturally emerge for an off-center observer for both the fine structure constant and for dark energy density. This model smoothly reduces to Λ CDM for proper limits of its parameters.

PACS numbers: 98.80.Es,98.65.Dx,98.62.Sb

1. INTRODUCTION

According to the cosmological principle, the Universe is homogenous and isotropic on scales larger than a few hundred Mpc. The main source of evidence which supports this assumption comes from the Cosmic Microwave Background (CMB) which appears to be isotropic to a high degree up to a dipole term which is assumed to be due to our motion with respect to the CMB frame. However, there has been some recent observational evidence which could be interpreted as a hint for deviations from large scale statistical isotropy. Such evidence includes alignment of low multipoles in the CMB angular power spectrum [1], large scale velocity flows [2, 3] and large scale alignment in the QSO optical polarization data [4] (see Ref. [5] for an interestin related theoretical model). These effects appear to persist on scales of 1 Gpc or larger and could constitute early hints for deviation from the FLRW metric on large cosmological scales and existence of cosmological preferred axis. This possibility is further enhanced by the fact that the anisotropy directions implied by these observations appear to be abnormally close to each other [6].

Additional hints for such possible deviations from the cosmological principle have recently been obtained by considering the angular distribution of luminosity distances of Type Ia supernovae (SnIa) [6–8] (see also [9–14] for other interesting studies) in a redshift range $z \in$

[0.015, 1.4] and the angular distribution of the fine structure constant in redshift range of $z \in [0.2223, 4.1798]$ as measured by the quasar absorption line spectra using the many multiplet method [15]. In both cases evidence for dipole anisotropy was found which in the case of SnIa was mild (about $1 - 2\sigma$) but in the case of the fine structure constant was significant (4.1σ).

The anisotropy analysis of Ref. [6] of the SnIa sample was based on the Union2 dataset [17] which consists of 557 SnIa. A hemisphere comparison method was used to find the hemisphere pair with maximal anisotropy with respect to Λ CDM fits. The maximum anisotropy direction was found to be towards $(l, b) = (309^\circ, 18^\circ)$ but the magnitude of this dark energy anisotropy was found to be consistent with statistical isotropy at the 2σ level. Similar results were obtained in Ref. [7] where a redshift tomography also revealed that most of the contribution to the mild dark energy dipole comes from the low redshift SnIa.

The anisotropy analysis of the fine structure constant α [15] is based on a large sample of quasar absorption-line spectra (295 spectra) obtained using UVES (the Ultraviolet and Visual Echelle Spectrograph) on the VLT (Very Large Telescope) in Chile and also previous observations at the Keck Observatory in Hawaii. An apparent variation of α across the sky was found. It was shown to be well fit by an angular dipole model $(\frac{\Delta\alpha}{\alpha}) = A \cos \theta + B$ where θ is the angle with respect to a preferred axis and A, B are the dipole magnitude and an isotropic monopole term. The dipole axis was found to point in the direction $(l, b) = (331^\circ, -14^\circ)$ and the dipole amplitude A was found to be $A = 0.97 \pm 0.21$. The statistical significance over an isotropic model was found to be at the 4.1σ level.

*Electronic address: antonio.mariano@le.infn.it

†Electronic address: leandros@uoi.gr

The analysis of Ref. [15] has received criticism [16] based mainly on the fact that its quasar sample combines two datasets (Keck and VLT) with different systematic errors which have a small overlapping subset and cover opposite hemispheres on the sky. The axis connecting these two hemispheres has similar direction with the direction of the obtained dipole. The response of the authors of Ref. [15] was based on the fact that in the equatorial region of the dipole, where both the Keck and VLT samples contribute a number of absorbers, there is no evidence for inconsistency between Keck and VLT.

The controversy about the possible problems in the analysis of Ref. [15] and the angular proximity between the dark energy axis of Ref. [6] and the $(\frac{\Delta\alpha}{\alpha})$ axis of Ref. [15] constitute the motivation to analyze both the SNIa and the quasar datasets in a similar and consistent manner. Thus we re-analyzed both datasets and fit them to the same dipole ansatz of the form $A \cos\theta + B$. This type of anisotropy fit is different from the corresponding SNIa fits of previous studies. Our goal is to address the following questions:

1. What are the best fit dipoles (magnitudes A and directions in galactic coordinates) for the Union2 and Keck+VLT samples? What is the angle between the two dipole directions?
2. How likely is it to obtain these dipole magnitudes in the context of an isotropic underlying model? How likely is it to obtain the observed angle between the dipoles if the two underlying models were isotropic and uncorrelated? We address these questions by producing a large number of Monte Carlo isotropic datasets simulating the Union2 and the Keck+VLT samples under the assumption of isotropic and uncorrelated underlying models. We then compare the obtained probability distributions for the dipole magnitudes and angles with the actually observed magnitudes and angle.
3. How do the answers to the above questions change if we consider three different redshift slices (bins) for each dataset (low, medium and high redshift) with approximately equal number of datapoints in each bin? Is there a particular redshift range where the dark energy and the fine structure dipoles are more prominent and how is this range related with the quality of the data in each bin?

These questions are addressed in detail in the following sections. In particular, the structure of this paper is the following: in the next section we derive the magnitudes and directions of the best fit dark energy and fine structure dipoles for the full Union2 and Keck+VLT datasets thus addressing the above question 1. We also perform 10^4 Monte Carlo simulations of the Union2 and Keck+VLT datasets based on an isotropic best fit Λ CDM model and on an isotropic best fit monopole model respectively. We then use these simulations to address the above question 2. In section 3 we perform a redshift

tomography to address question 3 and find the redshift range where the dipoles appear to be more pronounced. In section 4 we discuss a physical model that could reproduce the observed dipole alignment. Finally, in section 5 we conclude, summarize our basic results and discuss future prospects of the present work.

2. COSMIC DIPOLES: DATA ANALYSIS AND MONTE CARLO SIMULATIONS

A. Fine Structure Constant Dipole

The full Keck+VLT sample consists of 295 quasar absorption line spectra in a redshift range $z \in [0.2223, 4.1798]$. It has been analyzed in detail in Ref. [15] where the redshift of each absorber is presented along with fine structure constant deviation $(\frac{\Delta\alpha}{\alpha}) = \frac{\alpha_z - \alpha_0}{\alpha_0}$ where α_z is the value of α measured at redshift z using the many multiplet method [18] and α_0 is the value of α measured in the laboratory. The positions of the quasars in equatorial coordinates are also presented.

In order to fit the Keck+VLT dataset to a dipole anisotropy we proceed as follows:

- We convert the equatorial coordinates of each quasar to galactic coordinates.
- We find the cartesian coordinates of the unit vectors \hat{n}_i corresponding to each quasar with galactic coordinates (l, b) . We thus have

$$\hat{n}_i = \cos(b_i) \cos(l_i) \hat{i} + \cos(b_i) \sin(l_i) \hat{j} + \sin(b_i) \hat{k} \quad (2.1)$$

- We use the dipole+monopole angular distribution model

$$\left(\frac{\Delta\alpha}{\alpha}\right) = A \cos\theta + B \quad (2.2)$$

where $\cos\theta$ is the angle with the dipole axis defined by the vector

$$\vec{D} \equiv c_1 \hat{i} + c_2 \hat{j} + c_3 \hat{k} \quad (2.3)$$

such that

$$\hat{n}_i \cdot \vec{D} = A \cos\theta_i \quad (2.4)$$

We fit the the Keck+VLT dataset to a dipole anisotropy model (2.2) using the maximum likelihood method i.e. minimizing

$$\chi^2(\vec{D}, B) = \sum_{i=1}^{295} \frac{[(\frac{\Delta\alpha}{\alpha})_i - A \cos\theta_i - B]^2}{\sigma_i^2 + \sigma_{rand}^2} \quad (2.5)$$

where $(\frac{\Delta\alpha}{\alpha})_i$ and σ_i are obtained from the Keck+VLT dataset [15] and σ_{rand} is an internal random error, assumed to be the same for all data

points and representing an estimate of the aggregation of all additional random errors. We fix the value of σ_{rand} by requiring that at the best fit, $\chi^2(\vec{D}, B)$ per degree of freedom is about unity. The required value of σ_{rand} is 1.0×10^{-5} in agreement with the corresponding value used in Ref. [15].

- The magnitude and direction of the best fit dipole in galactic coordinates is obtained from the best fit c_i coordinates (e.g. $A = \sqrt{c_1^2 + c_2^2 + c_3^2}$) and the corresponding 1σ errors are obtained using the covariance matrix approach.

Our result for the best fit dipole direction and magnitude is consistent with the corresponding results of Ref. [15] (see also Table I). We find $A_{fs} = (1.02 \pm 0.25) \times 10^{-5}$ with direction ($b = -11.7^\circ \pm 7.5^\circ$, $l = 320.5^\circ \pm 11.8^\circ$) while for the best fit monopole term we have $B_{fs} = (-2.2 \pm 1.0) \times 10^{-6}$. This result shows that the isotropic model $A = 0$ is more than 4σ away from the best fit value of the dipole magnitude. The Keck+VLT dataset along with the best fit direction of the dipole in galactic coordinates is shown in Fig. 1. By the definition of $(\frac{\Delta\alpha}{\alpha})$ and the construction of the dipole model, the obtained dipole direction shown in Fig. 1 is the direction towards larger values of the fine structure constant α .

In an effort to better analyze the above results for the best fit dipole and its errors we have constructed a Monte Carlo simulation obtained from the Keck+VLT dataset under the assumption of an isotropic monopole model. Such a simulation is aimed at providing the probability distribution of the dipole magnitude and direction under the assumption of an isotropic monopole model and through that, the probability of obtaining the actually measured values in the context of an isotropic model. In order to construct the Monte Carlo simulation we proceed as follows:

- We define a gaussian random selection function $g(\mu, \sigma)$ which returns a random number from a gaussian probability distribution with mean μ and variance σ^2 .
- We fit the Keck+VLT dataset to an isotropic monopole model obtained from eq. (2.2) by setting $A = 0$. We find for the best fit monopole term: $B_{fs-m} = (-0.19 \pm 0.10) \times 10^{-5}$.
- We construct the isotropic Monte Carlo version of the Keck+VLT dataset by keeping fixed the direction of each quasar and assigning to each absorber an isotropic randomized fine structure constant variation obtained as:

$$\left(\frac{\Delta\alpha}{\alpha}\right)_i^{MC} = g(B_{fs-m}, \sigma_i) + g(0, \sigma_{rand}) \quad (2.6)$$

- We construct 10^4 such Monte Carlo datasets and obtain the probability distribution of the dipole

magnitude as well as the corresponding dipole directions. We thus find the number of isotropic datasets that have a dipole magnitude larger than the observed value of the dipole magnitude.

The obtained probability distribution of the dipole magnitudes is shown in Fig. 2 along with the actually observed value of A . None of the 10^4 isotropic Monte Carlo datasets had a dipole magnitude as large (or larger) as the one observed. We thus conclude that the probability to obtain the observed dipole magnitude of the Keck+VLT dataset in the context of an isotropic model is less than 0.01% (3.9σ) in agreement with the covariance matrix error and with the result of Ref. [15] where the value 4.1σ was obtained.

B. Dark Energy Dipole

We perform a similar dipole+monopole fit using the Union2 data. Instead of $(\frac{\Delta\alpha}{\alpha})$ which corresponds to fine structure constant deviations from its earth measured value we use the distance modulus deviation from its best fit Λ CDM value

$$\left(\frac{\Delta\mu(z)}{\bar{\mu}(z)}\right) \equiv \frac{\bar{\mu}(z) - \mu(z)}{\bar{\mu}(z)} \quad (2.7)$$

where $\bar{\mu}$ is the best fit distance modulus in the context of Λ CDM.

The 557 SNIa data points of the Union2 dataset are given in terms of the distance moduli

$$\mu_{obs}(z_i) \equiv m_{obs}(z_i) - M \quad (2.8)$$

where m_{obs} is the apparent magnitude of each SNIa and M is the absolute magnitude assumed to be common for all SNIa after proper calibration. Assuming a Λ CDM parametrization of the expansion rate

$$H(z)^2 = H_0^2[\Omega_{0m}(1+z)^3 + (1 - \Omega_{0m})] \quad (2.9)$$

the best fit distance modulus $\bar{\mu}(z)$ is determined by minimizing

$$\chi^2(\Omega_{0m}, \mu_0) = \sum_{i=1}^{557} \frac{[\mu_{obs}(z_i) - \mu_{th}(z_i)]^2}{\sigma_{\mu i}^2} \quad (2.10)$$

where $\sigma_{\mu i}^2$ are the distance modulus uncertainties which include both the observational and the intrinsic random magnitude scatter. The theoretical distance modulus is defined as

$$\mu_{th}(z_i) \equiv m_{th}(z_i) - M = 5\log_{10}(D_L(z)) + \mu_0 \quad (2.11)$$

where μ_0 is a constant related to the Hubble parameter $H_0 \equiv 100 h \text{ km}/(\text{sec} \cdot \text{Mpc})$ [19] as

$$\mu_0 = 42.38 - 5\log_{10}h \quad (2.12)$$

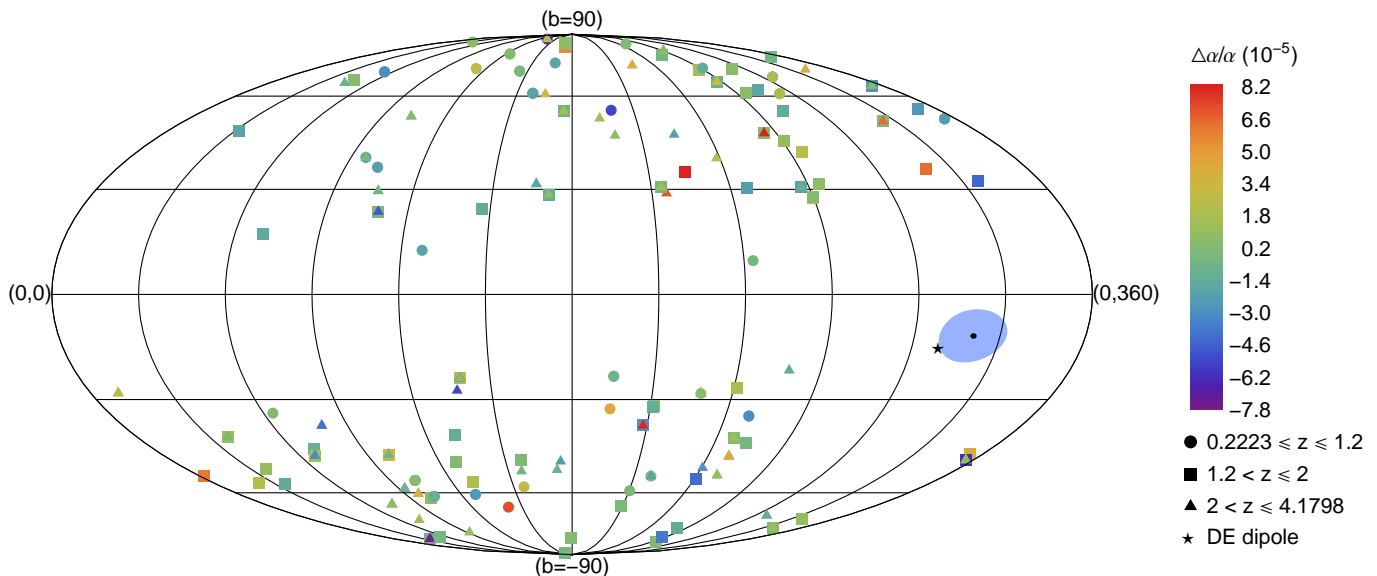


FIG. 1: Keck+VLT datapoints and α -dipole direction. Datapoints in three different redshift bins are represented with different shapes. For comparison the direction of the Dark Energy dipole obtained from the best fit of the Union2 data is shown with a star. The light blue blob represents the $1\text{-}\sigma$ error on the α -dipole direction.

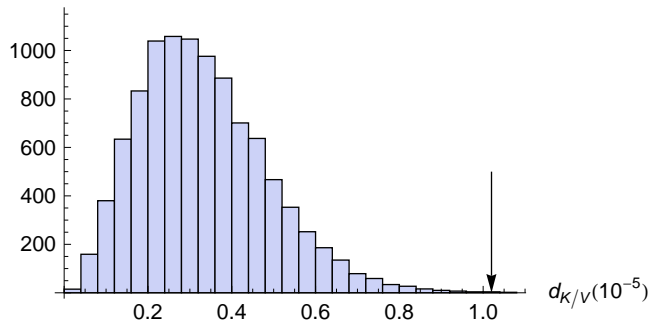


FIG. 2: Distribution of α -dipole magnitudes obtained from the Monte Carlo simulation. The arrow points to the position of the observed best fit value for the α -dipole magnitude.

and

$$D_L(z) = (1+z) \int_0^z dz' \frac{H_0}{H(z'; \Omega_{0m})} \quad (2.13)$$

is the Hubble free luminosity distance. A minimization of $\chi^2(\Omega_{0m}, \mu_0)$ using the Union2 dataset leads to the best fit parameter values $\Omega_{0m} = 0.269 \pm 0.020$ and $\mu_0 = 43.16 \pm 0.01$ which completely specify $\bar{\mu}(z_i)$ and therefore

$$\left(\frac{\Delta\mu(z_i)}{\bar{\mu}(z_i)} \right)_{obs} \equiv \frac{\bar{\mu}(z_i) - \mu(z_i)}{\bar{\mu}(z_i)} \quad (2.14)$$

for all Union2 datapoints.

We now perform the same analysis as for the Keck+VLT data, replacing the $\left(\frac{\Delta\alpha}{\alpha} \right)$ datapoints by the $\left(\frac{\Delta\mu(z)}{\bar{\mu}(z)} \right)$ datapoints. In the SnIa we set $\sigma_{rand} = 0$ since the random intrinsic magnitude scatter has already been included in the distance moduli errors σ_i .

We find the direction of the dark energy dipole to be $(b = -15.1^\circ \pm 11.5^\circ, l = 309.4^\circ \pm 18.0^\circ)$. The magnitudes of the dipole and monopole terms are found to be

$$A_{de} = (1.3 \pm 0.6) \times 10^{-3} \quad (2.15)$$

$$B_{de} = (2.0 \pm 2.2) \times 10^{-4} \quad (2.16)$$

The statistical significance of the dark energy dipole is at the 2σ level (significantly smaller than the 4σ of the fine structure constant dipole) but its direction is only 11° away from the corresponding direction of the fine structure constant dipole. The direction of the dark energy dipole along with the Union2 data $\left(\frac{\Delta\mu(z_i)}{\bar{\mu}(z_i)} \right)_{obs}$ are shown in Fig. 3 in galactic coordinates. The proximity of the two dipole directions is also made apparent in the same plot as well as by comparing with Fig. 1.

The direction of the dipole in Fig. 3 points towards brighter SnIa compared to best fit isotropic Λ CDM. This implies less accelerating expansion in that direction only if H_0 (which is related to μ_0 in eq. (2.11)) is assumed to be isotropic. This assumption was not made in Ref. [6] where μ_0 was simultaneously fit along with Ω_{0m} in each hemisphere. However, in the discussion of section 4 we will assume isotropic μ_0 and therefore lower acceleration in the direction of brighter SnIa.

In an effort to determine the likelihood of the observed dark energy dipole magnitude combined with its angular proximity to the fine structure dipole we have performed a Monte Carlo simulation consisting of 10^4 Union2 datasets constructed under the assumption of isotropic Λ CDM. Thus the distance modulus of point i is given by

$$\mu_{MC}(z_i) = g(\bar{\mu}(z_i), \sigma_i) \quad (2.17)$$

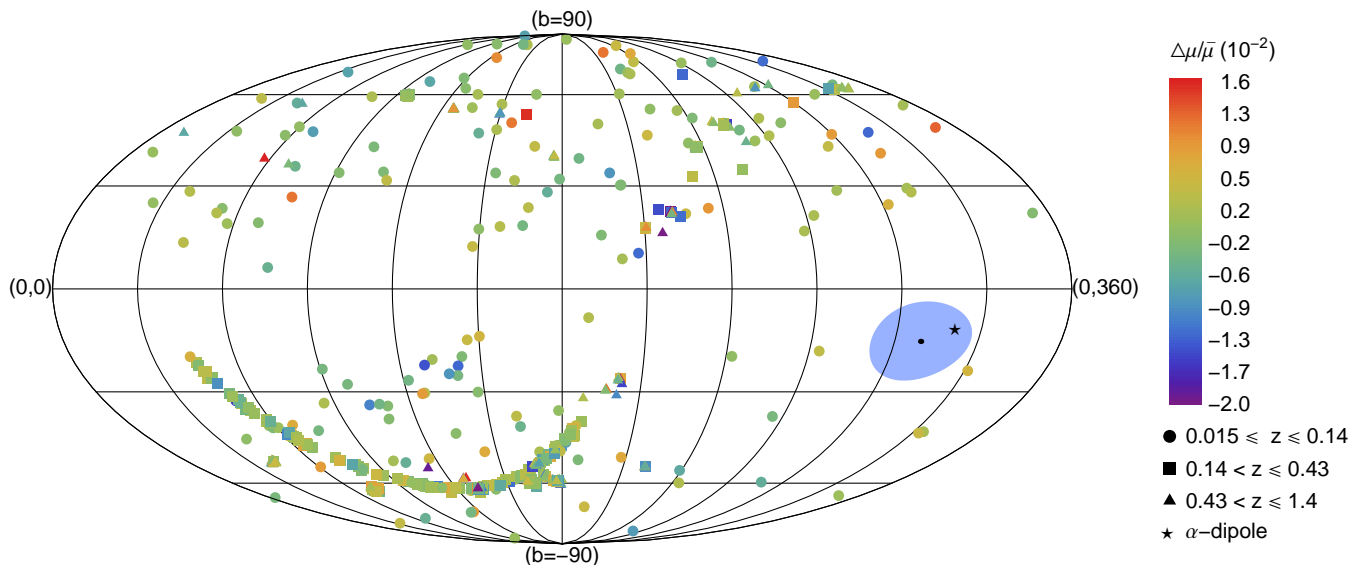


FIG. 3: Union2 datapoints and Dark Energy dipole direction. Datapoints in three different redshift bins are represented with different shapes. For comparison the direction of the α -dipole obtained from the best fit of the Keck-VLT data is shown with a star. The light blue blob represents the $1\text{-}\sigma$ error on the Dark Energy dipole direction.

where g is the gaussian random selection function de-

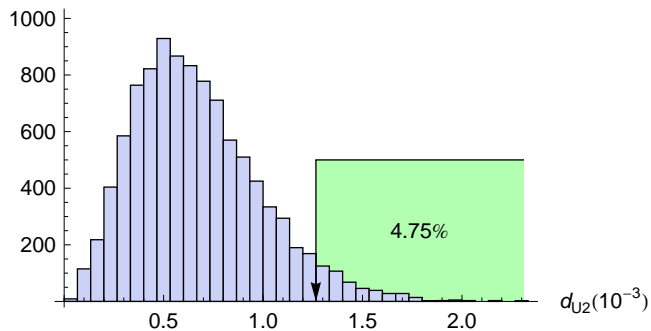


FIG. 4: Distribution of dark Energy dipole magnitudes obtained from the Monte Carlo simulation. The arrow points to the position of the observed best fit value and the light green area indicates fraction of the Monte Carlo datasets that give a dipole magnitude bigger than the observed best fit one.

finied in the previous subsection and $\bar{\mu}(z_i)$ is the best fit distance modulus of the Union2 data in the context of Λ CDM at redshift z_i . It is thus straightforward to construct $\left(\frac{\Delta\mu(z_i)}{\bar{\mu}(z_i)}\right)_{MC}$ for each Monte Carlo dataset and obtain its best fit dipole direction and magnitude. In Fig. 4 we show the probability distribution of the dark energy dipole magnitude in the context of isotropic Λ CDM along with the observed dipole magnitude indicated by an arrow. As expected from eq. (2.15) only 4.75% of the simulated isotropic datasets had a dark energy dipole magnitude larger than the observed value. This is consistent with eq. (2.15) which indicates that the statistical significance of the existence of a dark energy dipole is about 2σ .

In Fig. 5 we show the probability distribution of the angular distance of the isotropic simulated dipoles from the observed fine structure constant dipole discussed in section 2 A. Only 6.12% of the Monte Carlo datasets had such an angular distance smaller than the observed one. The probability for a Monte Carlo isotropic Union2 dataset to have both a dipole magnitude larger than the observed one and an angular separation from the fine structure dipole smaller than the observed one is 0.98%. This is larger than the anticipated value of $0.0612 \times 0.0475 = 0.29\%$ due to the nonuniform distribution of the SNIa in the sky. The convergence of these probabilities as we increase the number of Monte Carlo simulated isotropic datasets is shown in Fig. 6. Clearly the number of simulated datasets considered (10^4) is enough to achieve the convergence of the required probabilities. We estimate the combined probability that both dipoles have magnitudes larger than the observed and angular separation smaller than the observed in the context of isotropic underlying models to be less than $0.01\% \times 0.98\% \simeq 0.0001\%$ where the first factor comes from the magnitude of the fine structure constant dipole estimated in the previous subsection.

3. REDSHIFT TOMOGRAPHY

In the previous section we have shown that the dipole anisotropy model provides a significantly better fit than the isotropic model for both the fine structure constant and for the dark energy spatial distributions. We also demonstrated that the two dipole directions show a remarkable coincidence. In this section we focus on identifying the redshift ranges in which these effects are more

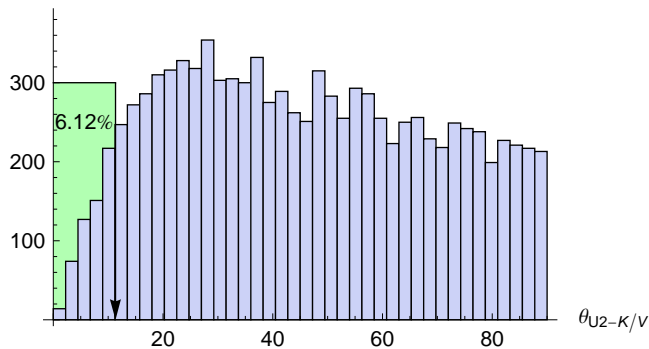


FIG. 5: Angular distances between the observed α -dipole direction and the dipole direction obtained from the Monte Carlo simulations on the Union2 data. The arrow points to observed angular distance value and the light green area represents the Monte Carlo datasets that give an angular distance smaller than the observed one.

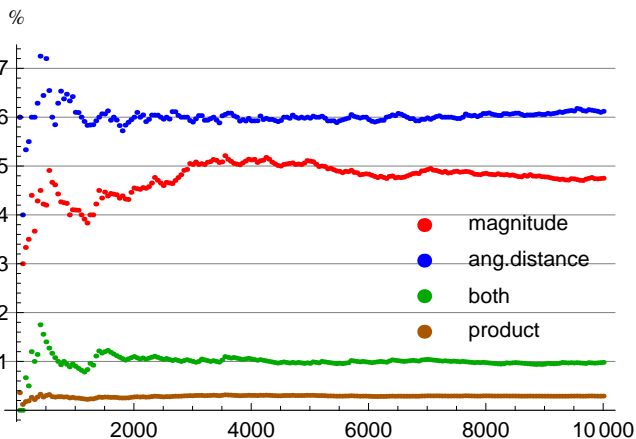


FIG. 6: Percentage of Union2 Monte Carlo dataset satisfying different constraints as a function of the number of Monte Carlo datasets considered. The points labelled as “magnitude” represent the fraction of Monte Carlo datasets that give a dipole magnitude larger than the observed one. Those labelled as “ang. distance” represent the fraction of Union2 Monte Carlo datasets that have an angular distance from the observed α -dipole smaller than the observed angular distance. The label “both” refers to the fraction of Monte Carlo datasets that satisfy both the previous constraints. With “product” we label the points that represent the product of the first two percentages.

prominent. We use two approaches: a redshift bin approach and a variable upper redshift cutoff approach. In the redshift bin approach, we divide each dataset in three redshift bins of approximately equal number of datapoints and perform an analysis similar to that of the previous section in each bin. Thus we compare the results of each bin with respect to the quality of data (errorbar sizes), the dipole magnitudes and the dipole directions. In the variable upper redshift approach we start with truncated datasets with an upper redshift cutoff consisting of about 1/2 of the datapoints. Then we increase the

upper redshift cutoff in five steps so that in the final step the full dataset is obtained in each case. We analyse each one of the six cumulative dataset parts with respect to their dipole magnitudes and their directions.

In Table I we focus on the Keck+VLT sample and show the redshift ranges of each redshift bin and of each one of the six cumulative redshift parts. We also consider a redshift bin that is common to the two datasets (Keck+VLT and Union2). For each redshift range we show the corresponding best fit monopole magnitude, the dipole magnitude, the direction of the best fit dipole in galactic coordinates and its angular separation from dark energy dipole (full Union2 dataset). A similar redshift tomography for the Union2 dataset is presented in Table II. The directions of the best fit dipoles for each one of the redshift ranges considered in Tables I and II is shown in Fig. 7 (the cumulative redshift parts are separately connected in increasing redshift order). The uncertainties shown in Tables I and II are obtained using the covariance matrices. We have checked that they are in good agreement with the corresponding 1σ errors obtained from the Monte Carlo simulations.

The following comments can be made based on the results shown in Tables I and II:

- The redshift bin with the smallest 1σ errors (best data quality) for the Union2 data is the low redshift bin ($z \in [0.015, 0.14]$). The corresponding best data quality redshift bin for the Keck+VLT dataset is the high redshift bin ($z \in [2, 4.1798]$).
- These best quality redshift bins also have the best dipole alignment and the most statistically significant deviation of the best fit dipole magnitudes from isotropy. It is therefore important to improve the quality of data in the other redshift bins in order to clarify whether the dipole trend is also strong in these bins where the data quality is lower.

The above points are also demonstrated in Figs. 8, 9 and 10. For each one of the redshift bins considered, we show in Fig. 8 the fraction of isotropic Union2 datasets that exceed the observed dipole dark energy magnitude and also have a smaller angular distance from the Keck+VLT dipole than the actually observed angular distance. Clearly, this fraction is significantly lower for the lowest redshift bin which implies that the dipole behavior and alignment is most significant for this redshift bin. In Fig. 9 we show the angular separation of each Union2 redshift bin from the best fit dipole direction of the full Keck+VLT dataset, as a function of redshift range for each Union2 bin. Clearly, the lowest redshift bin which also has the smallest angular separation error is the one that has its dipole best aligned with the Keck+VLT dipole. Finally, in Fig. 10 we show the angular separation of each Keck+VLT redshift bin from the best fit dipole direction of the full Union2 dataset, as a function of redshift range for each bin. Clearly, the highest redshift bin has the lowest error and good alignment with the Union2 dipole. In this case however, the best

	$m_{K/V}(10^{-6})$	$d_{K/V}(10^{-5})$	$b_{d_{K/V}}(^{\circ})$	$l_{d_{K/V}}(^{\circ})$	$\theta_{K/V-U2}(^{\circ})$	datapoints
$0.2223 \leq z \leq 4.1798$	-2.2 ± 1.0	1.02 ± 0.25	-11.7 ± 7.5	320.5 ± 11.8	11.3 ± 11.8	295
$0.2223 < z \leq 1.2$	-3.4 ± 1.8	0.8 ± 0.5	-4.7 ± 16.8	320.9 ± 27.5	15.4 ± 25.2	94
$1.2 < z \leq 2$	-2.7 ± 1.6	0.63 ± 0.41	-22.7 ± 20.1	332.2 ± 33.2	22.8 ± 28.5	103
$2 < z \leq 4.1798$	-1.5 ± 2.1	1.9 ± 0.4	1.8 ± 8.7	315.5 ± 11.3	18.0 ± 9.5	98
$0.2223 \leq z \leq 1.4$	-3.0 ± 1.5	0.8 ± 0.4	-13.8 ± 14.8	317.3 ± 24.3	7.7 ± 23.7	125
$0.2223 \leq z \leq 1.62$	-4.3 ± 1.4	0.51 ± 0.35	-13.7 ± 20.7	334.1 ± 34.0	24.0 ± 33.4	152
$0.2223 \leq z \leq 1.9$	-3.9 ± 1.2	0.7 ± 0.3	-13.8 ± 14.3	332.3 ± 23.7	22.2 ± 23.3	184
$0.2223 \leq z \leq 2.1$	-2.7 ± 1.1	0.7 ± 0.3	-15.1 ± 11.7	323.9 ± 19.0	14.0 ± 18.5	208
$0.2223 \leq z \leq 2.45$	-2.3 ± 1.1	0.9 ± 0.3	-12.6 ± 9.3	322.8 ± 14.9	13.2 ± 14.9	242
$0.2223 \leq z \leq 2.7$	-2.4 ± 1.0	0.95 ± 0.27	-12.5 ± 8.2	319.4 ± 13.2	10.0 ± 13.1	269

TABLE I: Keck+VLT data: Monopole, dipole magnitude and direction and angular distance from the Dark Energy dipole in several redshift ranges. The angular distance with respect to the Union2 dipole is referred to the full redshift case for the Union2 dataset. We don't include the common range bin ($0.2223 < z \leq 1.4$) since it differs from the fifth line in the table only by one datapoint (with $z = 0.2223$).

	$m_{U2}(10^{-4})$	$d_{U2}(10^{-3})$	$b_{d_{U2}}(^{\circ})$	$l_{d_{U2}}(^{\circ})$	$\theta_{U2-K/V}(^{\circ})$	datapoints
$0.015 \leq z \leq 1.4$	2.0 ± 2.2	1.3 ± 0.6	-15.1 ± 11.5	309.4 ± 18.0	11.3 ± 17.3	557
$0.015 < z \leq 0.14$	2.6 ± 3.4	1.7 ± 0.8	-10.1 ± 15.1	308.8 ± 22.8	11.6 ± 22.1	184
$0.14 < z \leq 0.43$	2.6 ± 5.6	1.2 ± 1.9	-10.7 ± 28.7	291.4 ± 37.2	28.6 ± 36.7	186
$0.43 < z \leq 1.4$	0.7 ± 4.3	0.9 ± 0.8	-25.1 ± 30.6	34.3 ± 75.7	70.6 ± 68.7	187
$0.015 \leq z \leq 0.23$	3.3 ± 2.9	1.8 ± 0.7	-8.5 ± 12.4	302.2 ± 16.6	18.3 ± 16.0	239
$0.015 \leq z \leq 0.31$	3.8 ± 2.9	1.9 ± 0.7	-7.6 ± 11.6	307.0 ± 14.7	13.9 ± 13.8	292
$0.015 \leq z \leq 0.41$	3.0 ± 2.7	1.8 ± 0.7	-14.4 ± 10.3	303.6 ± 14.4	16.6 ± 14.1	352
$0.015 \leq z \leq 0.51$	2.2 ± 2.6	1.4 ± 0.7	-14.9 ± 12.7	301.3 ± 18.8	18.9 ± 18.2	406
$0.015 \leq z \leq 0.64$	2.1 ± 2.4	1.4 ± 0.6	-16.0 ± 11.0	305.3 ± 16.9	15.4 ± 16.2	464
$0.015 \leq z \leq 0.89$	2.2 ± 2.3	1.4 ± 0.6	-15.6 ± 10.4	309.8 ± 16.0	11.1 ± 15.3	519
$0.2223 < z \leq 1.4$	1.2 ± 2.5	0.51 ± 0.48	-44.0 ± 62.5	59.3 ± 147.6	88.2 ± 110.6	319

TABLE II: Union2 data: Monopole, dipole magnitude and direction and angular distance from the α -dipole in several redshift ranges. The angular distance respect to the α -dipole is referred to the full redshift case for the Keck-VLT dataset.

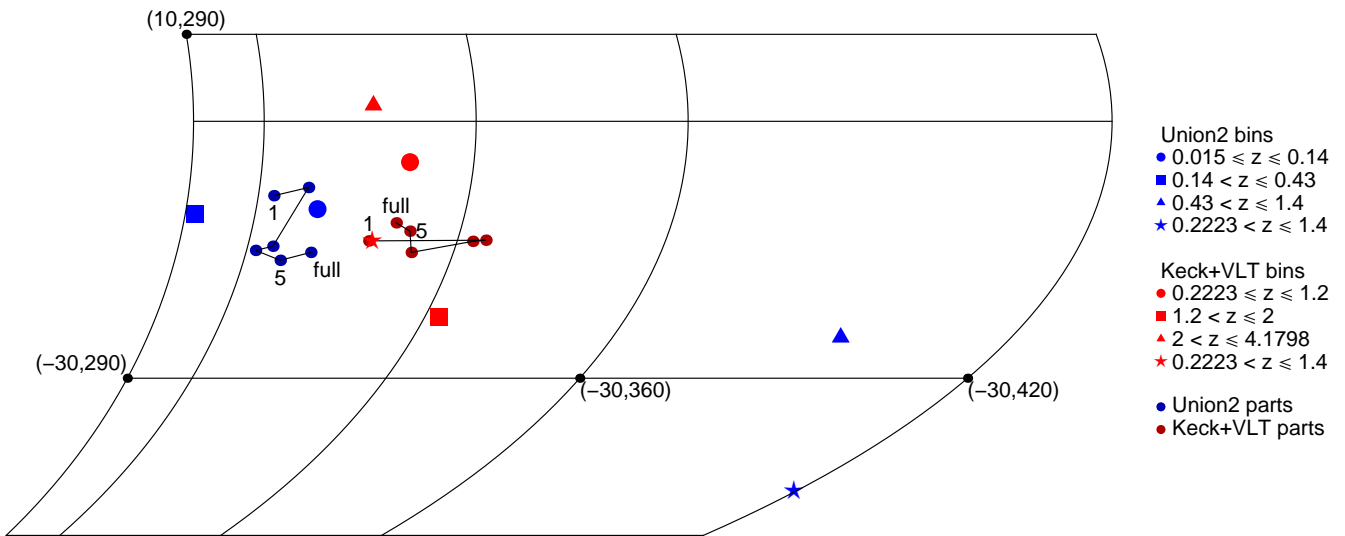


FIG. 7: Fine structure α and Dark Energy dipole directions for the different redshift bins. The 'stars' denote the bins corresponding to the redshift range that is common to the Keck+VLT and Union2 samples. For this range however, the dipole uncertainty obtained from the Union2 data is very large (see last line of Table (II)).

fit dipole direction appears to be more consistent among the three redshift bins while the directional errorbars are significantly smaller than the Union2 case.

4. PHYSICAL MECHANISM: EXTENDED TOPOLOGICAL QUINTESSENCE

If the observed coincident large dipole anisotropies are due to a physical mechanism and not to systematic or sta-

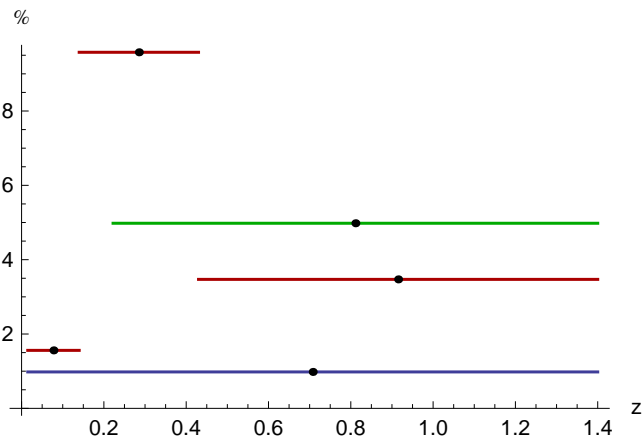


FIG. 8: Percentage of the Monte Carlo Union2 datasets that give both a Dark Energy dipole larger than the observed value and an angular distance between the Dark Energy dipole and the α -dipole smaller than the observed angular distance. The result is plotted for the full and partial redshift bins.

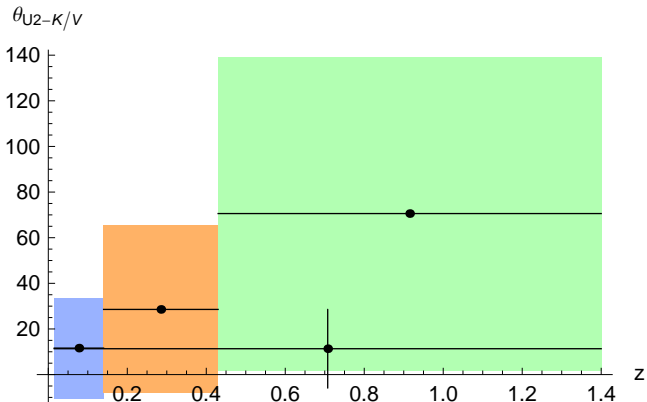


FIG. 9: Angular distances (with errors) between the Dark Energy dipole obtained in the different redshift bins and the α -dipole obtained from the full redshift range Keck+VLT data. Notice that the lowest Union2 redshift bin dipole has the best alignment with the Keck+VLT dipole and also has the smallest error.

tistical fluctuations, then it is of particular interest to investigate what could be a physical model that could give rise simultaneously to these coincident dipoles. Such a mechanism could involve for example an inhomogeneous scalar field which couples to electromagnetism through a non-minimal coupling and whose potential energy could provide the dark energy required for accelerating expansion. Due to negative pressure such a scalar field would tend to quickly become homogenous and isotropic on Hubble scales. However, nontrivial topology would naturally generate sustainable inhomogeneity [20] of such a scalar field.

For a proper potential, the scale of the inhomogeneity would be the observationally required Hubble scale. In such a Hubble scale topological defect, an off center observer would observe aligned dipoles in both dark energy

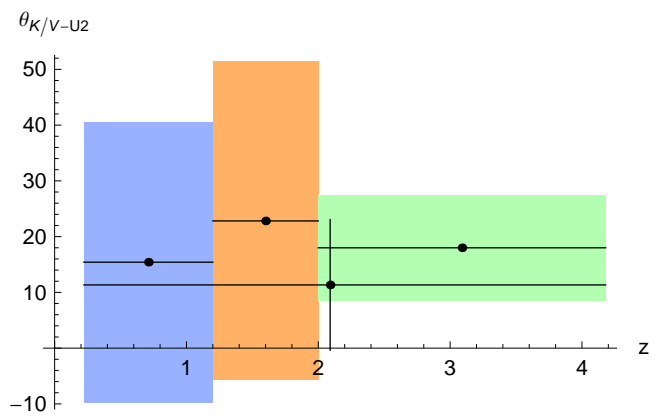


FIG. 10: Angular distances (with errors) between the α -dipole obtained in the different redshift bins and the Dark Energy dipole obtained from the full redshift range Union2 data. Notice that the alignment of all Keck+VLT redshift bin dipoles with the full Union2 dipole is consistent with each other and similar to the alignment of the full Keck+VLT dataset.

and the fine structure constant. For a large enough core scale, such a defect would become effectively homogenous and indistinguishable from Λ CDM. The dipole nature of observations of off-center observers located in spherically symmetric inhomogeneities has been discussed in detail in Refs [21, 22]

In the case of no coupling to electromagnetism, this mechanism was studied in detail in Ref. [20] (topological quintessence). In what follows we present some qualitative features of this extended topological quintessence model and we postpone a more detailed study for a later publication.

Consider the action

$$S = \int \left[\frac{1}{2} M_p^2 R - \frac{1}{2} (\partial_\mu \Phi^a)^2 - V(\Phi) + \frac{1}{4} B(\Phi) F_{\mu\nu}^2 + \mathcal{L}_m \right] \sqrt{-g} d^4x, \quad (4.1)$$

where $M_p^{-2} = 8\pi G$ is the reduced Planck mass, \mathcal{L}_m is the Lagrangian density of matter fields, Φ^a ($a = 1, 2, 3$) is an $O(3)$ symmetric scalar field, $B(\Phi)$ is a non-minimal coupling to electromagnetism and

$$V(\Phi) = \frac{1}{4} \lambda (\Phi^2 - \eta^2)^2, \quad \Phi \equiv \sqrt{\Phi^a \Phi^a}. \quad (4.2)$$

We assume the existence of a Hubble scale global monopole formed during a recent cosmological phase transition. The vacuum energy density in the monopole core and the size of the core are determined by the two parameters of the model η (the vacuum expectation value) and λ (the coupling constant). The global monopole field configuration is described by the hedgehog ansatz

$$\Phi^a = \Phi(r, t) \hat{r}^a \equiv \Phi(r, t) (\sin \theta \cos \varphi, \sin \theta \sin \varphi, \cos \theta) \quad (4.3)$$

with boundary conditions

$$\Phi(0, t) = 0 \quad , \quad \Phi(\infty, t) = \eta, \quad (4.4)$$

where η is the scale of symmetry breaking assumed to be such that [20]

$$\frac{\lambda\eta^2}{3H_0^2} \gtrsim 1 \quad (4.5)$$

In eq. (4.3) we have allowed for a time dependence having in mind a cosmological setup of an expanding background. For a slowly evolving global monopole configuration, the size of the core is approximated by

$$\delta \simeq \lambda^{-1/2}\eta^{-1}, \quad (4.6)$$

while the vacuum energy density in this core region is

$$\rho^{core} \simeq \frac{\lambda\eta^4}{4}. \quad (4.7)$$

For a core size much larger than the Hubble scale, the model reduces to Λ CDM. Therefore the constraints imposed on inhomogeneous matter models[24] are not applicable to this class of inhomogeneous dark energy models.

The general spherically symmetric spacetime around a global monopole may be described by a metric of the form

$$ds^2 = -dt^2 + A^2(r, t)dr^2 + B^2(r, t)r^2(d\theta^2 + \sin^2\theta d\varphi^2). \quad (4.8)$$

A detailed analysis of the cosmological evolution of the above metric in the presence of the global monopole and matter is presented in Ref. [20] with $B(\Phi) = 1$ (see also Ref. [21]).

Consider now a non-minimal coupling of the form

$$B(\Phi) = 1 - \xi \frac{\Phi}{\eta} \quad (4.9)$$

where ξ is constant. The fine structure ‘constant’ is related to the coupling $B(\Phi)$ as

$$\alpha(\Phi) = \frac{e_0^2}{4\pi B(\Phi)^2} \quad (4.10)$$

where e_0 is the bare charge that remains constant throughout the cosmological evolution. Therefore for small values of Φ/η we have

$$\left(\frac{\Delta\alpha}{\alpha}\right) \simeq 2\xi \frac{(\Phi - \Phi_0)}{\eta} \quad (4.11)$$

where Φ_0 is the field magnitude at the location of the observer. The dipole directions shown in Figs. 1 and 3 correspond to higher value of α and lower accelerating expansion (brighter SNIa compared to Λ CDM) respectively. Thus, in the extended topological quintessence picture, for an off-center observer, this would be the direction pointing away from the global monopole core where the

potential energy of the monopole is lower and the field magnitude Φ is larger. In order to have a higher value of the fine structure constant in the same direction we need $\xi > 0$.

We postpone a detailed reconstruction of the global monopole potential $V(\Phi)$ and coupling $B(\Phi)$ for a later publication. A comparison of the quality of fit for different topological defect geometries could also be made (global vortex or thick domain wall). We also stress that our extended topological quintessence approach is distinct from the model of Refs. [25, 26] where thin domain walls were considered in an effort to explain the spatial variation of α . The approach of Refs. [25, 26] does not address the dark energy dipole and predicts a non-dipole anisotropy for α . The dipole anisotropy however has been shown [27] to provide a better fit to the Keck+VLT data.

5. CONCLUSIONS

We have used the Keck+VLT dataset and the Union2 dataset to show that the value of the fine structure constant and the rate of accelerating expansion are better described by coinciding dipoles than by isotropic cosmological models. Using Monte Carlo simulations and covariance matrix error estimates, we find that the probability that these coinciding dipoles are both produced in the context of a cosmological model where fine structure constant and dark energy are isotropic and uncorrelated is less than one part in 10^6 . A redshift tomography analysis dividing the two datasets in three redshift bins revealed that the highest data quality redshift bins correspond to low redshifts for the Union2 sample and high redshift for the Keck+VLT data. The dipole direction for the Keck+VLT data depends weakly on redshift while the Union2 dipole direction depends more strongly on redshift and it is the low redshift (and lowest error) bin that is best aligned with the Keck+VLT dipole. The directional uncertainty is significantly larger for the medium and higher redshift Union2 dipoles. It is therefore important to improve the quality of intermediate and high redshift SNIa data in order to further test the alignment of the dark energy dipole with the fine structure constant dipole.

An important issue that we have not addressed in the present paper is the effect of systematic errors of the Keck+VLT sample. This issue has been addressed in detail in Ref. [15] where no significant source of systematic errors was identified. The main concern has been the possibility of careless merging of the two datasets (VLT and Keck) which in principle have different systematics and effectively cover opposite hemispheres of the sky which coincide with the direction of the identified Keck+VLT dipole. The concern therefore is that the large identified dipole magnitude originates from a hidden difference in systematic errors between the VLT and Keck samples. According to Ref. [15] this does not appear to be the case for the following reasons:

- the dipole directions at high and low redshifts are in agreement (this is confirmed in our study too as shown in Figs. 7 and 10);
- the directions of the dipoles fitted by the VLT and by the Keck samples separately are in agreement;
- the absorbers that are common to both the VLT and the Keck sample provide consistent values for α .

Even though the above arguments of Ref. [15] are reasonable, a truly convincing analysis would involve observation of the same objects with a different telescope. This has already been done by the Subaru telescope in August 2004 [28]. An analysis of these observations could provide a particularly useful independent verification of the fine structure constant dipole.

Finally we have proposed a theoretical model that has the potential to predict strong aligned dipoles for the fine structure constant and for dark energy. The model is based on a non-minimal coupling of a topologically non-trivial scalar field to electromagnetism (extended topological quintessence). In such a model, an off-center observer with respect to the Hubble scale core of a global monopole would naturally observe large aligned dipoles for the fine structure constant and dark energy. In fact

it should be possible to reconstruct both the scalar field potential and the non-minimal coupling form using the Keck+VLT and the Union2 samples. A detailed investigation of this type is an interesting extension of the present analysis.

Numerical Analysis Files: The data, mathematica and C program files used for the numerical analysis files may be downloaded from <http://leandros.physics.uoi.gr/defsdipoles>.

Acknowledgements

We thank Michael Murphy for clarifications regarding the Keck+VLT data of Ref. [15]. AM was supported by the European Union under the Marie Curie Initial Training Network “UNILHC” PITN-GA-2009-237920. This research has been co-financed by the European Union (European Social Fund - ESF) and Greek national funds through the Operational Program “Education and Lifelong Learning” of the National Strategic Reference Framework (NSRF) - Research Funding Program: THALIS. Investing in the society of knowledge through the European Social Fund.

-
- [1] C. J. Copi, D. Huterer, D. J. Schwarz and G. D. Starkman, arXiv:1004.5602 [astro-ph.CO].
- [2] R. Watkins, H. A. Feldman and M. J. Hudson, arXiv:0809.4041 [astro-ph].
- [3] A. Kashlinsky, F. Atrio-Barandela, D. Kocevski and H. Ebeling, arXiv:0809.3734 [astro-ph].
- [4] D. Hutsemekers, R. Cabanac, H. Lamy and D. Sluse, *Astron. Astrophys.* **441**, 915 (2005) [arXiv:astro-ph/0507274]; D. Hutsemekers, A. Payez, R. Cabanac, H. Lamy, D. Sluse, B. Borguet and J. R. Cudell, arXiv:0809.3088 [astro-ph]; D. Hutsemekers and H. Lamy, arXiv:astro-ph/0012182.
- [5] P. Ciarcelluti, arXiv:1201.6096 [astro-ph.CO].
- [6] I. Antoniou and L. Perivolaropoulos, *JCAP* **1012**, 012 (2010) [arXiv:1007.4347 [astro-ph.CO]].
- [7] J. Colin, R. Mohayaee, S. Sarkar and A. Shafieloo, *Mon. Not. Roy. Astron. Soc.* **414**, 264 (2011) [arXiv:1011.6292 [astro-ph.CO]].
- [8] R. Cooke and D. Lynden-Bell, *Mon. Not. Roy. Astron. Soc.* **401**, 1409 (2010) [arXiv:0909.3861 [astro-ph.CO]].
- [9] M. Blomqvist, E. Mortsell and S. Nobili, *JCAP* **0806**, 027 (2008) [arXiv:0806.0496 [astro-ph]]; M. Blomqvist, J. Enander and E. Mortsell, *JCAP* **1010**, 018 (2010) [arXiv:1006.4638 [astro-ph.CO]].
- [10] A. R. Cooray, D. E. Holz and R. Caldwell, *JCAP* **1011**, 015 (2010) [arXiv:0812.0376 [astro-ph]].
- [11] S. Gupta and T. D. Saini, arXiv:1005.2868 [astro-ph.CO].
- [12] D. J. Schwarz and B. Weinhorst, *Astron. Astrophys.* **474**, 717 (2007) [arXiv:0706.0165 [astro-ph]].
- [13] L. Campanelli, P. Cea, G. L. Fogli and A. Marrone, *Phys. Rev. D* **83**, 103503 (2011) [arXiv:1012.5596 [astro-ph.CO]].
- [14] R. -G. Cai and Z. -L. Tuo, *JCAP* **1202**, 004 (2012) [arXiv:1109.0941 [astro-ph.CO]].
- [15] J. K. Webb, J. A. King, M. T. Murphy, V. V. Flambaum, R. F. Carswell and M. B. Bainbridge, *Phys. Rev. Lett.* **107**, 191101 (2011) [arXiv:1008.3907 [astro-ph.CO]]; J. A. King, J. K. Webb, M. T. Murphy, V. V. Flambaum, R. F. Carswell, M. B. Bainbridge, M. R. Wilczynska and F. E. Koch, arXiv:1202.4758 [astro-ph.CO].
- [16] S. M. Carroll, <http://blogs.discovermagazine.com/cosmicvariance/2010/10/18/the-fine-structure-constant-is-probably-constant/>
- [17] R. Amanullah *et al.*, *Astrophys. J.* **716**, 712 (2010) [arXiv:1004.1711 [astro-ph.CO]].
- [18] J. K. Webb, V. V. Flambaum, C. W. Churchill, M. J. Drinkwater and J. D. Barrow, *Phys. Rev. Lett.* **82**, 884 (1999) [astro-ph/9803165].
- [19] J. C. B. Sanchez, S. Nesseris and L. Perivolaropoulos, *JCAP* **0911**, 029 (2009) [arXiv:0908.2636 [astro-ph.CO]].
- [20] J. C. Bueno Sanchez and L. Perivolaropoulos, *Phys. Rev. D* **84**, 123516 (2011) [arXiv:1110.2587 [astro-ph.CO]].
- [21] J. Grande and L. Perivolaropoulos, *Phys. Rev. D* **84**, 023514 (2011) [arXiv:1103.4143 [astro-ph.CO]].
- [22] H. Alnes and M. Amarnioui, *Phys. Rev. D* **74**, 103520 (2006) [astro-ph/0607334].
- [23] M. Zumalacarregui, J. Garcia-Bellido and P. Ruiz-Lapuente, arXiv:1201.2790 [astro-ph.CO].
- [24] M. Zumalacarregui, J. Garcia-Bellido and P. Ruiz-Lapuente, arXiv:1201.2790 [astro-ph.CO].
- [25] K. A. Olive, M. Peloso and A. J. Peterson,

- arXiv:1204.4391 [astro-ph.CO].
- [26] K. A. Olive, M. Peloso and J. -P. Uzan, Phys. Rev. D **83**, 043509 (2011) [arXiv:1011.1504 [astro-ph.CO]].
- [27] J. C. Berengut, E. M. Kava and V. V. Flambaum, arXiv:1203.5891 [astro-ph.CO].
- [28] T. Chiba, Prog. Theor. Phys. **126**, 993 (2011) [arXiv:1111.0092 [gr-qc]].